

Data sheet

Patch cord Cat.6_A AWG 26 20.0 m gray

Page 1/6

P/N

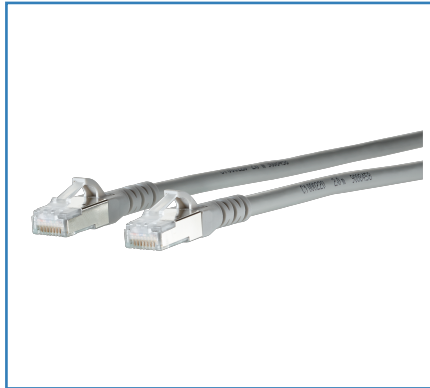
130845B033-E

EAN 4250184119371

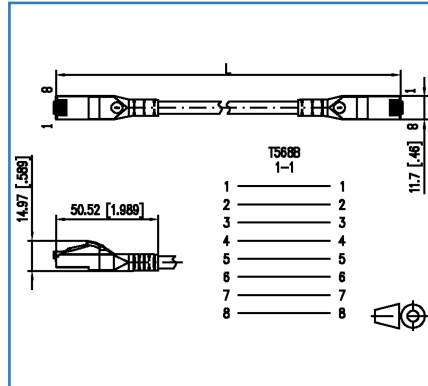
2019/09/18

Version: AJ

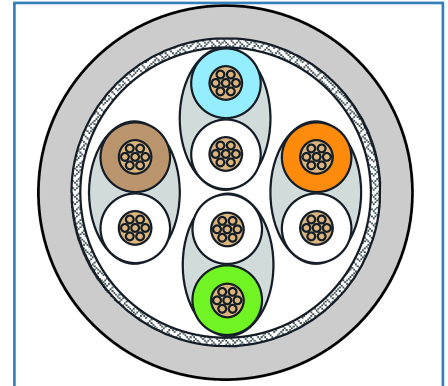
Illustrations



Dimensional drawing



Principle diagram



See enlarged drawings at the end of document



Product specification

- especially suitable for shielded and unshielded class E_A systems
- fully shielded Cat.6_A patch cord AWG 26/7
- two shielded RJ45 connectors; 1:1 assignment
- cable type: S/FTP 4x2xAWG 26/7 PIMF
- cable sheath: LSHF (LSOH), halogen free
- component testing for Cat.6_A acc. to ISO/IEC 11801-1 and IEC 61935-2, certified to GHMT
- class E_A Link up to 500 MHz to ISO/IEC 11801-1, DIN EN 50173-1
- suitable for 10 GBit Ethernet (IEEE 802.3an) and Remote Powering (PoE, PoE plus and UPoE) and HDBaseT
- snagless boot with integrated lever protection
- colors may differ slightly due to different protection lots



Technical Data

General Data

| | |
|-------------------------------------|--|
| Fields of application | Structured building cabling, Office Data center |
| Design | patch cord |
| Shielding | shielded |
| Transmission technology | Copper |
| Cable Type | S/FTP |
| Number of twisting elements | 4 |
| Twisting element | Pair |
| Wiring | 1 - 1 |
| Color | gray |
| Dimensions | |
| Dimension - Interface 1 (L x W x H) | 50.52 mm x 11.7 mm x 14.97 mm |
| Dimension - Interface 1 (L x W x H) | 1.989 in. x 0.461 in. x 0.589 in. |
| Dimension - Interface 2 (L x W x H) | 50.52 mm x 11.7 mm x 14.97 mm |
| Dimension - Interface 2 (L x W x H) | 1.989 in. x 0.461 in. x 0.589 in. |
| Cable length (m) | 20 m |
| Cable length (ft) | 65.62 ft |
| Marking option | by cable boot |

Transmission characteristics

| | |
|---------------------------------|----------------|
| Category (ISO) | 6 _A |
| Class (ISO/IEC) | E _A |
| Category (TIA) | 6A |
| Remote Powering | yes |
| PoE | IEEE 802.3af |
| PoE plus | IEEE 802.3at |
| UPoE | yes |
| HDBaseT | yes |
| Transmission rate up to 10 GBit | IEEE 802.3an |



Technical Data

Connections/interfaces

| | |
|---|-----------------------|
| Connector technology interface 1 | RJ45 plug |
| Connector technology interface 2 | RJ45 plug |
| Number of ports interface 1 | 1 |
| Number of ports interface 2 | 1 |
| Number of equipped ports interface 1 | 1 |
| Number of ports interface 2 equipped | 1 |
| Number of positions/contacts interface 1 | 8P/8C |
| Number of positions/contacts interface 2 | 8P/8C |
| Termination data, stranded wire (min. - max.) | |
| Conductor cross section, stranded wire | AWG 26/7 |
| Conductor cross section, stranded wire | 0.141 mm ² |
| Conductor diameter, stranded wire (bare copper) | 0.483 mm |
| Conductor diameter, stranded wire (bare copper) | 0.019 in. |
| Cable sheath diameter (min. - max.) | |
| Cable sheath diameter | 6.2 mm |

Electrical characteristics

| | |
|---|---------------|
| Current carrying capacity | max. 1 A |
| Rated voltage | max. 50 V |
| Contact resistance | max. 20 mOhm |
| Through resistance | max. 200 mOhm |
| Insulation resistance | min. 100 MOhm |
| Dielectric strength conductor-conductor (primarily) | max. 500 V DC |
| Dielectric strength conductor-conductor (secondary) | max. 500 V DC |

Mechanical characteristics

| | |
|---|-----|
| Position/mounting of latch - standard installation position | top |
|---|-----|

Materials and material properties

| | |
|-------------------------------------|--------------------|
| Material - Cable jacket | LSHF (LSOH) |
| Material - Plug housing interface 1 | PC (polycarbonate) |
| Material - Plug housing interface 2 | PC (polycarbonate) |
| Material - Contact interface 1 | CuSn (tin bronze) |
| Material - Contact interface 2 | CuSn (tin bronze) |



Technical Data

Materials and material properties

| | |
|---|-------------------|
| Material - Contact finish interface 1 | Au (gold) |
| Material - Contact finish interface 2 | Au (gold) |
| Material - Contact carriers interface 1 | Plastics |
| Material - Contact carriers interface 2 | Plastics |
| Material - Shield interface 1 | CuSn (tin bronze) |
| Material - Shield interface 2 | CuSn (tin bronze) |
| Material - Shield finish interface 1 | Sn (tin) |
| Material - Shield finish interface 2 | Sn (tin) |
| Halogen free | yes |
| RoHS | compliant |

Environmental conditions

| | |
|--------------------------------|----------------|
| Temperature (min. - max.) | |
| Temperature - Storage Â°C | -20 °C - 60 °C |
| Temperature - Storage Â°F | -4 °F - 140 °F |
| Temperature - Operating °C | -20 °C - 60 °C |
| Temperature - Operating °F | -4 °F - 140 °F |
| Temperature - Installation Â°C | 50 °C |
| Temperature - Installation Â°F | 32 °F - 122 °F |

Certifications

| | |
|---|--------------------------------------|
| GHMT PVP | |
|  | |
| GHMT PVP - Period of validity | 2020/01/31 |
| Note on GHMT PVP | Tested lengths: 1, 2, 5, 10 and 20 m |

The product meets the following standards

| | |
|---|---|
| Generic cabling systems | |
| General requirements | ISO/IEC 11801 Ed.2.2:2011-06 DIN EN 50173-1:2011-09 ANSI/TIA-568-C.2 |
| Connectors for electronic equipment | |
| Free and fixed connectors | IEC 60603-7-51 |
| Information technology equipment - Radio disturbance characteristics | DIN EN 55022 |

Technical Data

Classifications

| | |
|----------|----------|
| ETIM 5.0 | EC001262 |
| ETIM 6.0 | EC001262 |
| ETIM 7.0 | EC001262 |

Packing details

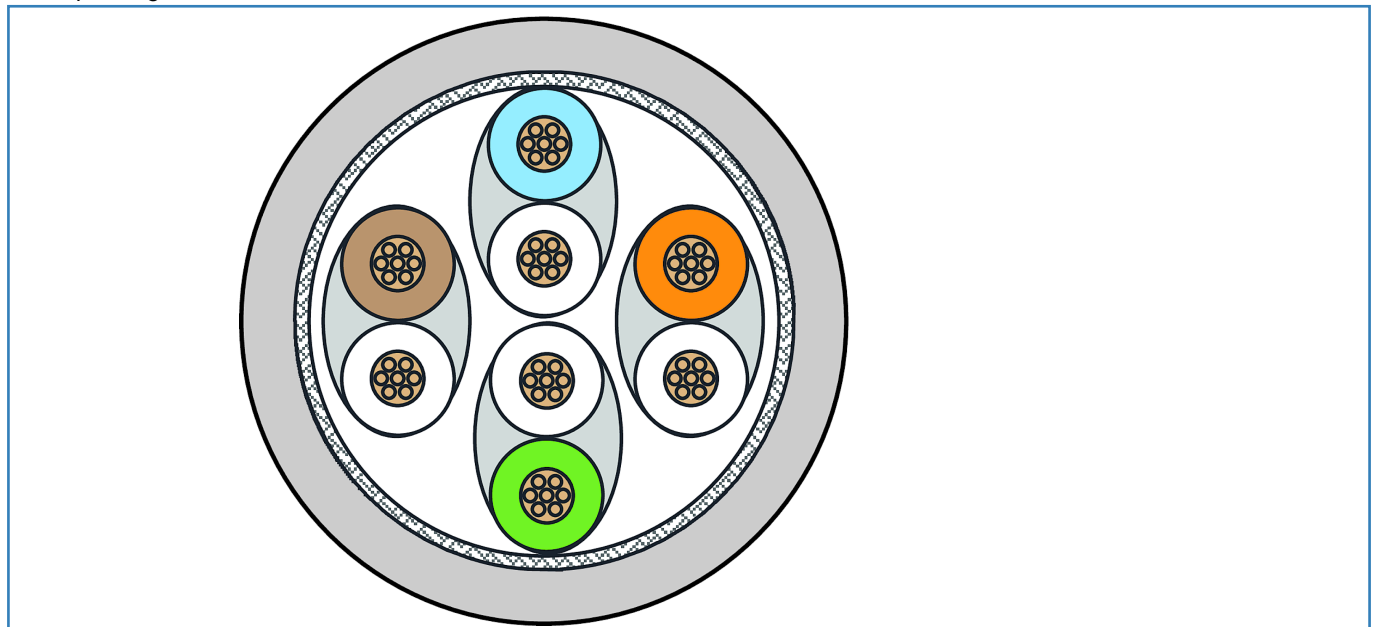
| | |
|---------------------------------|------------------------------------|
| Type of packaging | 1 pc(s) / plastic bag |
| Packaging unit - Weight (gram) | 807 g |
| Packaging unit - Weight (pound) | 1.78 lb |
| Packaging dimension | 160 mm x 100 mm x 380 mm |
| Packaging dimension | 6.299 in. x 3.937 in. x 14.961 in. |

Illustrations

Dimensional drawing



Principle diagram



© 2019 METZ CONNECT - Technische Änderungen vorbehalten! Subject to modifications! Sous réserve de modifications techniques!