

Data sheet

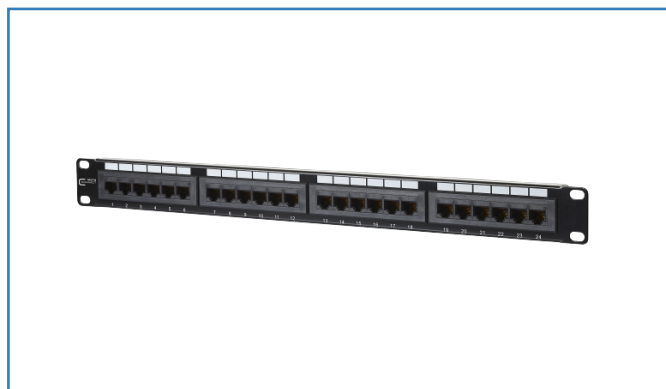
UTP 24 port 1RU LSA Cat.6 patch panel

Page 1/5

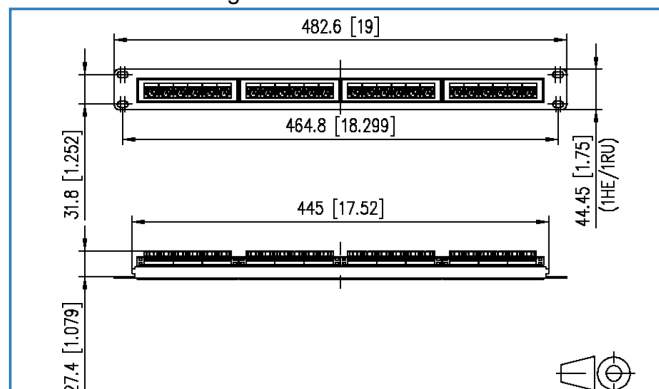
P/N
130A10-AP29-E
EAN 4250184169826

2017-18-08

Illustrations



Dimensional drawing



See enlarged drawings at the end of document

Product specification

- 19 inch 1RU Cat.6 patch panel with 24 RJ45 ports 8(8)
- 19 inch module frame made of black sheet steel
- 4 individual 6 port connection blocks, unshielded
- connection of the unshielded data cables to LSA insulation displacement connectors (AWG 22 to 26)
- wire connection possible according to T568A and T568B
- with 4 clip-in plastic cable brackets
- punch down patch panel

Technical Data

General Data

Fields of application	Office
Design	patch panel
Mounting style	1RU
Shielding	unshielded
Transmission technology	Copper
Wiring	T568A, T568B
Color	black
Dimensions	
Dimension (L x W x H)	27.40 x 482.60 x 44.45 mm
Dimension (L x W x H)	1.079 x 19.00 x 1.75 in.
Inches	19 inches
Height unit	1RU
Labeling option	firmly printed label areas

Transmission characteristics

Category (ISO)	6
Class (ISO/IEC)	E
Category (TIA)	6
PoE	IEEE 802.3af
PoE plus	IEEE 802.3at
UPoE	yes
Transmission rate up to 10 GBit	IEEE 802.3an

Connections/interfaces

Connector technology interface 1	LSA terminal block
Connector technology interface 2	RJ45-jack
Number of ports interface 2	24
Number of ports interface 2 equipped	24
Number of positions/contacts interface 1	24 x 8
Number of positions/contacts interface 2	24 x 8P/8C



Technical Data

Electrical characteristics

Current carrying capacity	max. 1 A
Rated voltage	max. 50 V
Contact resistance	max. 20 mOhm
Through resistance	max. 200 mOhm
Insulation resistance	min. 500 MOhm
Dielectric strength conductor-conductor (secondary)	min. 1000 V DC

Mechanical characteristics

Insertion and withdrawal force	max. 20 N
Life - Number of mating cycles	min. 750
Position/mounting of latch - standard installation position	bottom

Materials and material properties

Material - Terminal block housing	PBT (polybutylene terephthalate)
Material - Jack contact	CuSn (tin bronze)
Material - Jack contact finish	Ni + Au (nickel-gold)
Material - Terminal block contact	CuZn (brass)
Material - Terminal block contact finish	Sn (tin)
Material - Module support	sheet steel

Environmental conditions

Temperature (min. - max.)	
Temperature - Storage °C	-40 - 70 °C
Temperature - Storage °F	-40 - 158 °F
Temperature - Operating °C	-40 - 70 °C
Temperature - Operating °F	-40 - 158 °F
Rapid change of temperature	-40°C / -40°F - +70°C / 158°F / 25 cycles t=30 min
Electromagnetic measurement	E ₁



Data sheet UTP 24 port 1RU LSA Cat.6 patch panel

Page 4/5

P/N
130A10-AP29-E
EAN 4250184169826

2017-18-08

Technical Data

Approvals

RoHS compliant

The product meets the following standards

Generic cabling systems

General requirements ISO/IEC 11801 Ed.2.2:2011-06 | DIN EN 50173-1:2011-09
TIA/EIA 568-C.2 (2009-08)

Connectors for electronic equipment

Free and fixed connectors DIN EN 60603-7-4:2011-03

Classifications

ETIM 5.0 EC001128

ETIM 6.0 EC001128

Packing details

Type of packaging 1 pc(s) / box

Packaging unit - Weight (gram) 1640.00 g

Packaging unit - Weight (pound) 3.62 lb

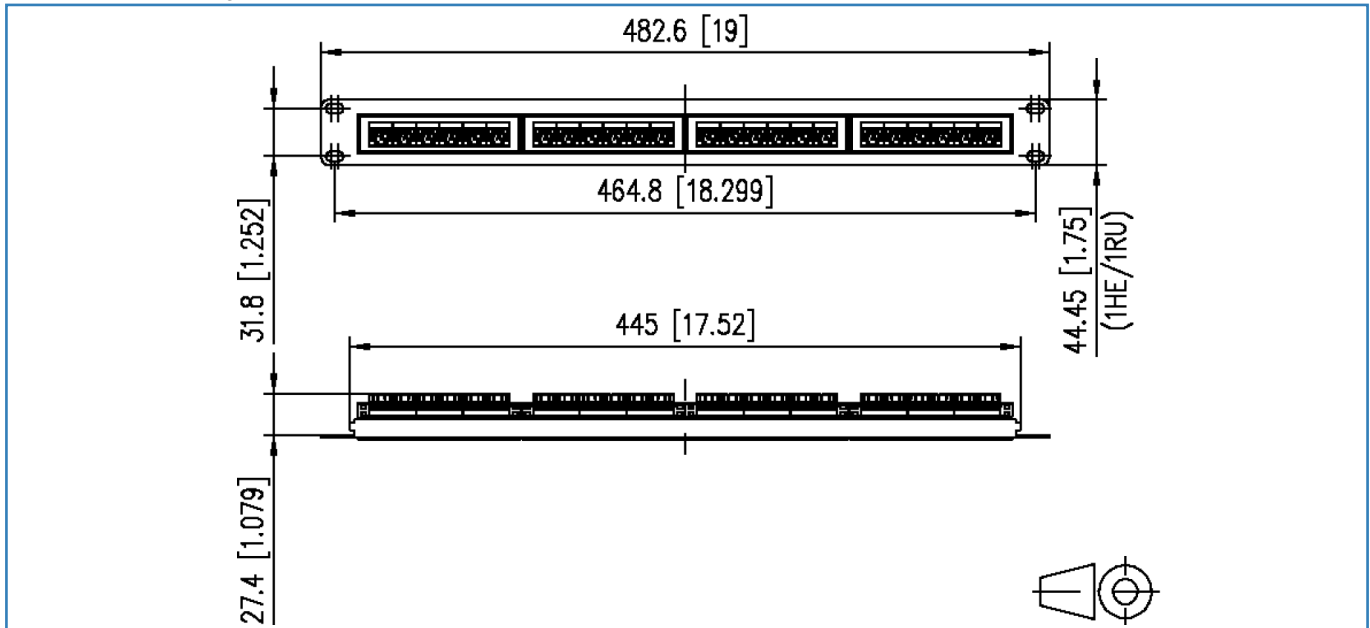
Packaging dimension (W x H x D) 520.00 x 180.00 x 46.00 mm

Packaging dimension (W x H x D) 20.472 x 7.087 x 1.811 in.



Illustrations

Dimensional drawing



© 2017 METZ CONNECT - Technische Änderungen vorbehalten! Subject to modifications! Sous réserve de modifications techniques!

