

PATCHBOX Plus+ PATCHBOX 365 SETUP.EXE /dev/mount

PATCHBOX

Simplify IT

Simplify Cable Management.

- PATCHBOX Plus+
- PATCHBOX 365

Simplify Hardware Installation.

- Setup.exe

Simplify Device Mounting.

- /dev/mount

Founded with a strong dedication to the optimization of IT maintenance our PATCHBOX, Setup.exe and /dev/mount radically simplify processes on the network racks and cabinets achieving significantly faster maintenance times and a safer working environment. Since 2015 together with our dedicated global distribution partners we have provided numerous satisfied customers globally from our head office in Vienna.

patchbox.com

2017 **Cabling**
Installation & Maintenance
Gold
Innovators Awards

PATCHBOX Plus+ PATCHBOX 365

PATCHBOX Simplify IT



All-in-one: Cable Routing & Patching Solution



Stows Excess Patch Cords Automatically



Patented & Award Winning



Integrated Documentation & Labeling Solution



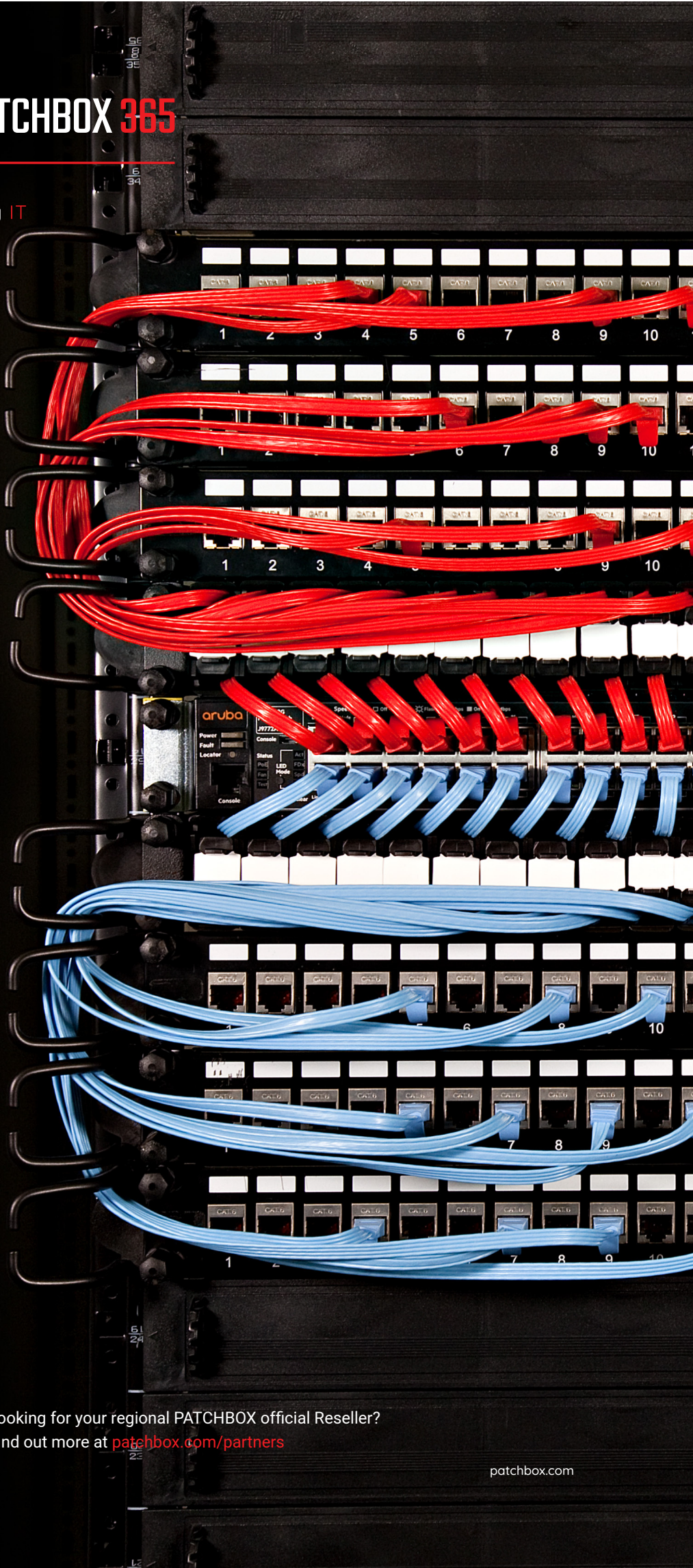
Organized & Structured Overview



Perfect Length Patch Cords Every Time!



5 Year Manufacturer Warranty



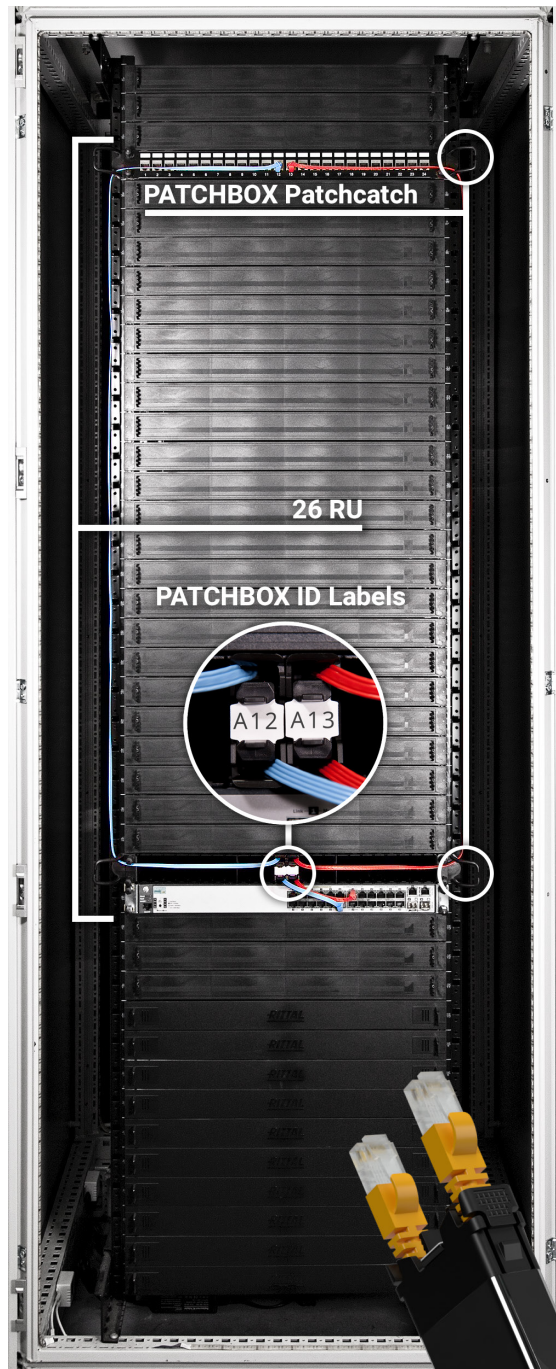
PATCHBOX OFFICIAL
RESELLER

Looking for your regional PATCHBOX official Reseller?
Find out more at patchbox.com/partners

patchbox.com

The PATCHBOX - Simplify Cable Management

The PATCHBOX is the very latest and state-of-the-art cabling system for network racks that replaces conventional cable management and patch cords. Thanks to our innovative pulley mechanism, the PATCHBOX provides the user with patch cords at the exact length required every time. As a result, we have raised the industry standard to a new level: A completely revolutionary new type of cable management in network racks that drastically accelerates all processes.



Unbeatable logic

Achieve the impossible! A visual overview of the network cabinet. Always recognize what's connected and what isn't.

10x faster maintenance

Using the PATCHBOX time required for maintenance is reduced to a minimum and with superior accuracy. With PATCHBOX swift action is possible in any emergency.

Stays neat

The spring loaded system in every PATCHBOX cassette retracts any excess patch cords and stows cables safely.

Fluke certified

Every patch cord both fiber and copper are tested to ISO/IEC 11801 standards.

Space saver & cord keeper

PATCHBOX patch cords are always operation ready and provide a higher packing density compared to conventional methods.

Modular cassettes system

The PATCHBOX cassettes contain shielded or unshielded Cat. 6 cables (UTP/STP) and are also available as fiber optic (OS2/OM4).

PATCHBOX cable colors

Patch cords for both the PATCHBOX Plus+ and PATCHBOX 365 are available in eight colors; black, white, red, green, blue, yellow, violet and grey*.



*Grey STP only.

patchbox.com

Fastest troubleshooting ever with the PATCHBOX

With the PATCHBOX you can achieve the impossible: a forever clean and neat network rack. Save money with faster troubleshooting, maintenance and restructuring messy network racks. The PATCHBOX even brings a visual logic to your network rack so you can replace a faulty network switch in less than three minutes. Say goodbye to expensive switches with redundant power supplies and get a PATCHBOX instead.

	PATCHBOX 365	PATCHBOX Plus+	PATCHBOX Long Range	Conventional Cable management*
Unit depth	365mm	600mm	600mm	/
Cable length	0.8m	1.7m	1.7m + 1m over-length	Cable spaghetti!
Modular flexibility: Cat. 6, OM4, OS2	✓	✓	✓	✗
Remains organized & structured	✓	✓	✓	✗
Cable routing & patching solution	✓	✓	✓	✗
5 year manufacturer warranty	✓	✓	✓	✗
Quick cable tracing solution	✓	✓	✓	✗
Fast troubleshooting	✓	✓	✓	✗
Integrated labeling & documentation	✓	✓	✓	✗
Manufacturer Support	✓	✓	✓	✗

*Compared to conventional cable management / no cable management.

Everything included and customized to your specification

Order your PATCHBOX pre-assembled to your specific requirements. Available on request.



5 year manufacturer warranty on the PATCHBOX Plus+ and PATCHBOX 365

We believe in quality. The springs we use in our cassettes are built to last millions of pulling cycles. The cassette profiles are made of CroMo Steel. The connectors on the patch cords have extra thick gold plating to guarantee as many mating cycles as possible. We also source locally whenever possible to have a close relationship with our suppliers. We provide a 5 year warranty on all production related issues on both our PATCHBOX Plus+ and PATCHBOX 365.



PATCHBOX Plus+ PATCHBOX 365



PATCHBOX awarded with the Gold Innovators Award - Cabling Installation & Maintenance 2017.

5
YEAR

WARRANTY

PATCHBOX provides a 5 year manufacturer warranty on the PATCHBOX Plus+ and PATCHBOX 365

See the PATCHBOX in 3D at patchbox.com/patchbox/3d



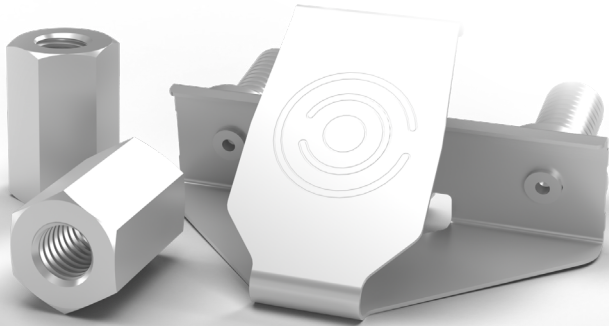
PATCHBOX OFFICIAL
RESELLER

Looking for your regional PATCHBOX official Reseller?
Find out more at patchbox.com/partners

patchbox.com

/dev/mount

PATCHBOX Simplify IT



Holds equipment securely

Constructed from spring steel and aluminium the /dev/mount is the ideal tool for mounting equipment into 19" network racks at superior speed.

Quick mounting & release system

The /dev/mount increases speed and accuracy of hardware installations.

Toolless

The included hex-nuts can be tightened by hand making the installation process completely toolless.

Effortless use

The /dev/mount requires zero assembly prior install and snaps securely in to position.

Made in Germany

The /dev/mount is made of high quality materials meeting the industries highest standards.

Conventional cage nuts usually have sharp serrated edges that can lead to painful cuts. The /dev/mount is designed with practicality, safety and ease of use in mind to protect the most important tool - your hand. The /dev/mount not only gets the job done faster, but it's also safer.

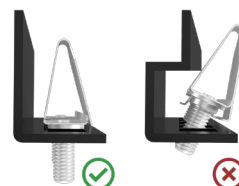
The /dev/mount sets a new standard in terms of speed and safety with its revolutionary yet simple handling. Because of the /dev/mount's unique and reversed design compared to cage-nuts 19" equipment is already secured in place before being completely screwed in. This guarantees the safe and quick installation of 19" equipment.

The /dev/mount is ready for immediate use without prior assembly. It's quick mounting function increases productivity considerably and therefore drastically simplifies the installation of equipment in server and network cabinets. With /dev/mount you can achieve more with fewer parts. Conventional cage nuts consist of many individual parts the require pre-assembly and therefore cumbersome to handle. Compared to cage nuts, only half the parts are required to mount 1U hardware.

Compatibility with 19" rails:

The /dev/mount is compatible with 19" rails with square holes. A minimum of 25mm of space behind the holes of a rail is required to mount the /dev/mount.

See the /dev/mount in 3D at patchbox.com/dev/mount/3d



**PATCHBOX OFFICIAL
RESELLER**

Looking for your regional PATCHBOX official Reseller?
Find out more at patchbox.com/partners

SETUP.EXE

PATCHBOX Simplify IT



2020 **Cabling**
Installation & Maintenance
Platinum
Innovators Awards

Setup.exe awarded with the Platinum Honoree Innovators Award von Cabling Installation & Maintenance 2020.

With the Setup.exe, installing heavy equipment into network cabinets can be carried out by just one person. The Setup.exe carries components such as Switch until they are completely fastened. Mounted facing out of the network cabinet, it serves as a shelf / workspace for e.g. a laptop or patch panel while it is being installed. See the Setup.exe in 3D at patchbox.com/setup-exe/3d



Your irreplaceable third hand

The Setup.exe will make your routine tasks work much easier. Expensive hardware is supported by the Setup.exe during installation keeping both hands free to screw it in.

Your tools with you always

In addition to a screwdriver and cable ties, cage nuts can also be attached to the Setup.exe. So you always have everything you need with you.

Mounted in seconds

The Setup.exe comes with two spring loaded bolt plungers that safely secure the Setup.exe in place.

Lifetime warranty

Quality and innovation are both of highest priority at PATCHBOX. You'll only ever need one Setup.exe.

Mobile workspace

Easily configure Switches, Servers etc. with two hands while the Setup.exe holds your Laptop or diagnostic tools for you.

Adjustable & compatible

The Setup.exe is compatible with all 19" rails with square holes.



**PATCHBOX OFFICIAL
RESELLER**

Looking for your regional PATCHBOX official Reseller?
Find out more at patchbox.com/partners

patchbox.com

PATCHBOX Plus+ PATCHBOX 365 SETUP.EXE /dev/mount

PATCHBOX Simplify IT

